



Prairie Grove Planning Commission

JANUARY 11, 2024

Agenda and Election of Officers

The Election of 2024 officers will take place at the January meeting.

Colin Cheatham and Rob Shertzner have been reappointed by Mayor Faulk to a new term.



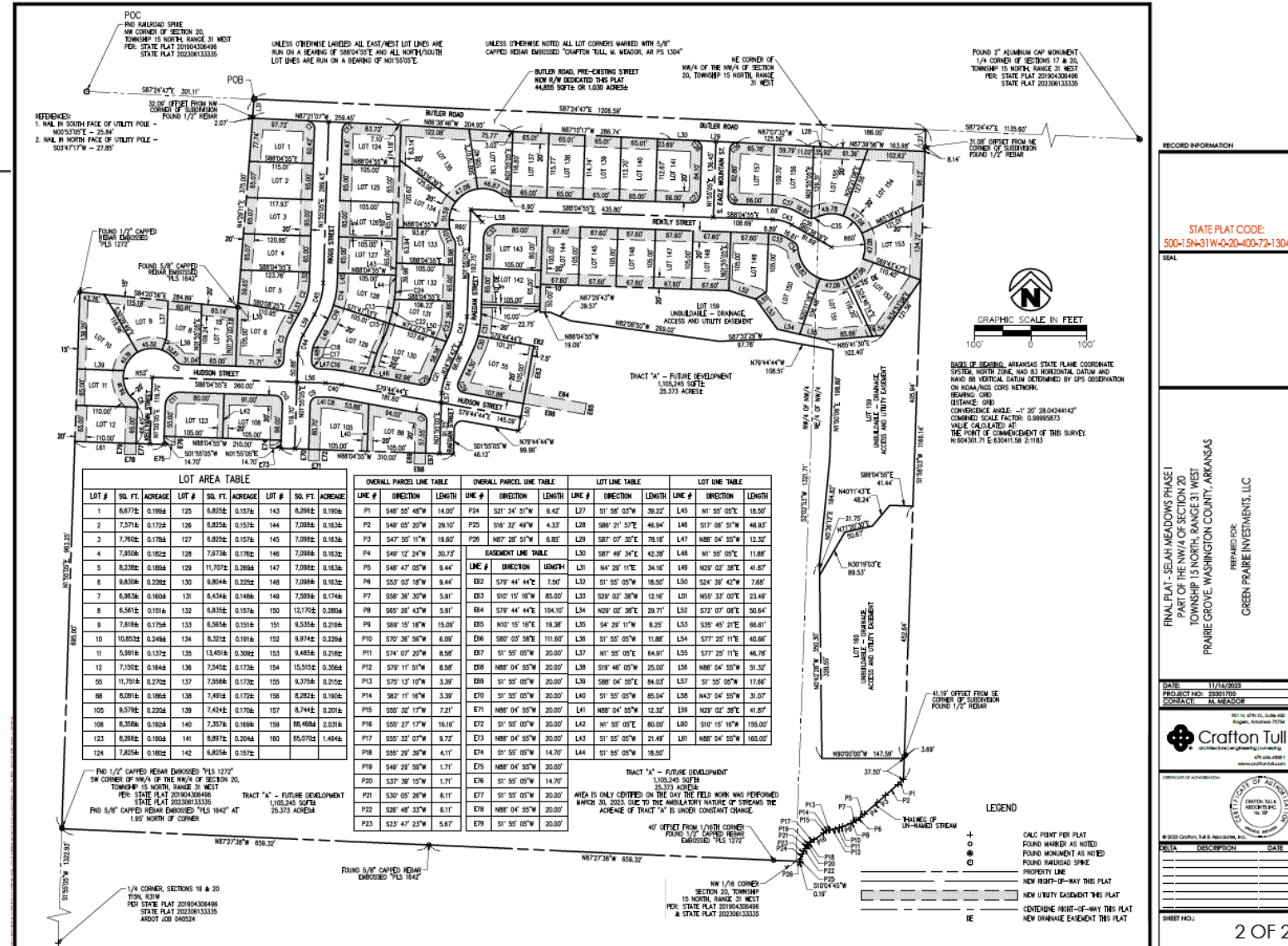
Notice of Meeting Prairie Grove Planning Commission

The Prairie Grove Planning Commission will meet at 955 E. Douglas on January 11, 2024 at 6:00 to hear the following items:

1. Selah Meadows Final Plat presented by Blake Murray with Crafton Tull
2. Large Scale Development presented by Josh Haley with ESI for Prairie Grove Junior High at 807 N. Mock Street
3. Variance Request by Jason Skelton for Appeal from relief from dimension requirements for yards or lots in unusual circumstances-pertaining to building setback in a B-1 zone at 206 S. Neal.
4. Concept/Sketch Plat submittal from Half Construction for subdivision on Stonewall Road

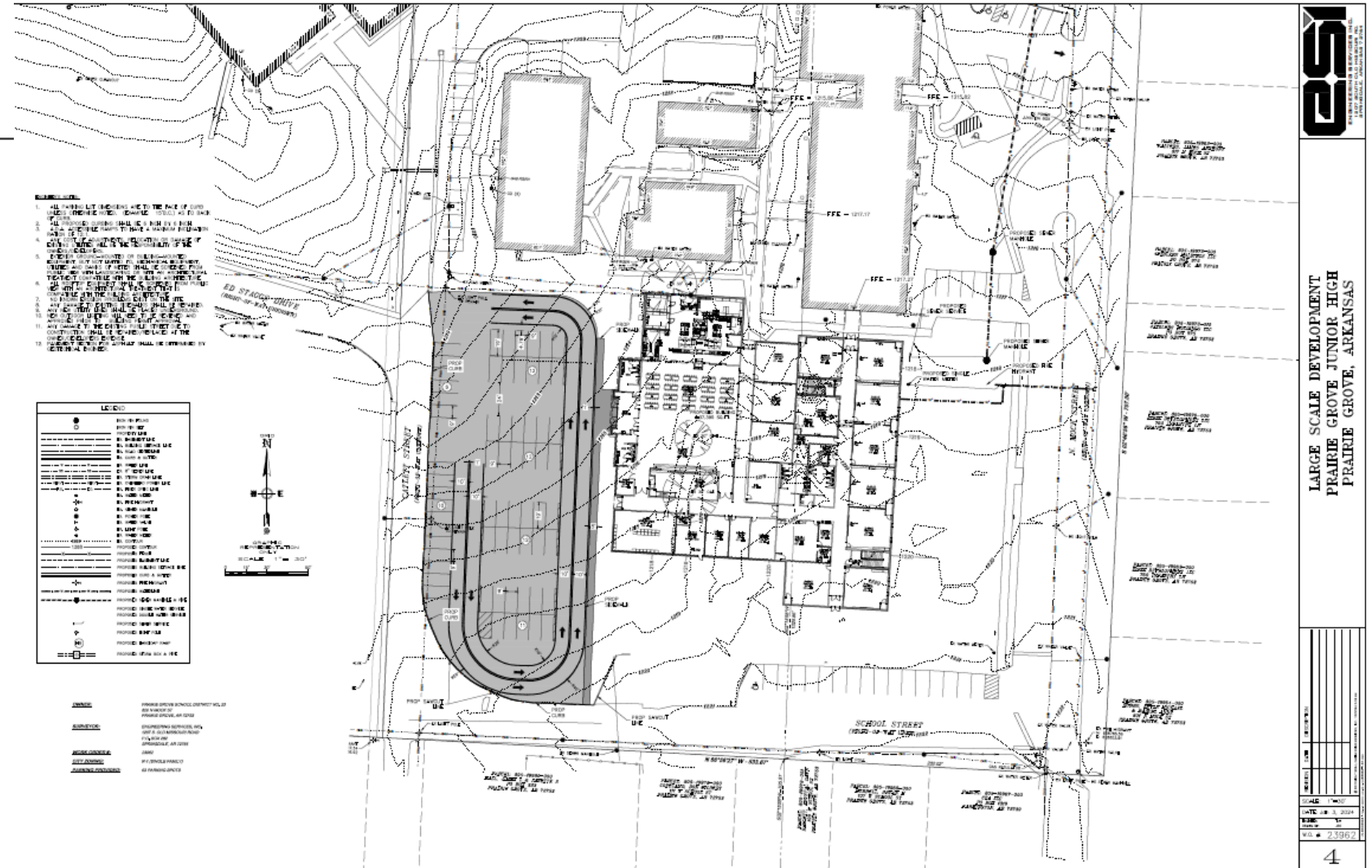
Selah Meadows, Phase 1 Final Plat

New Streets
Hudson Street
Riggs Street
Rently Street
Raegan Street
Eagle Mountain Street (continuation
of the street from the Mountain View
Subdivision)



Large Scale Development – PG Schools

This is to be located on North Mock Street at the location of the old high school, most recently used as a Jr. High. The building will be a slightly larger footprint extending into the parking lot and will include a second story.



Variance Request from Jason Skelton

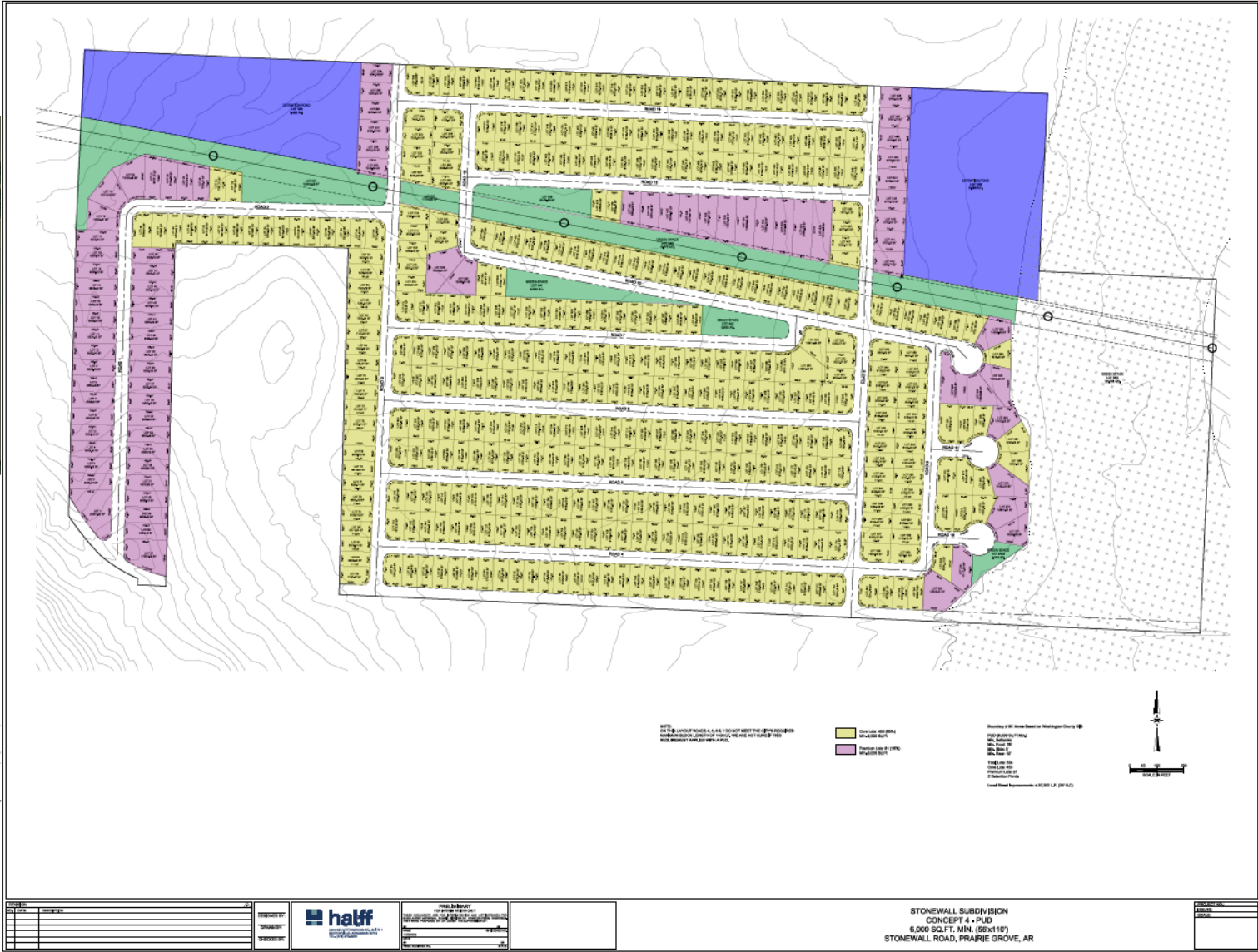
Skelton wishes to convert an existing building once used as a car wash into a new building in the same slightly adjusted foot print that currently does not meet the requirements for setbacks in a B-1 zone.

All Commercial Districts except CBD-

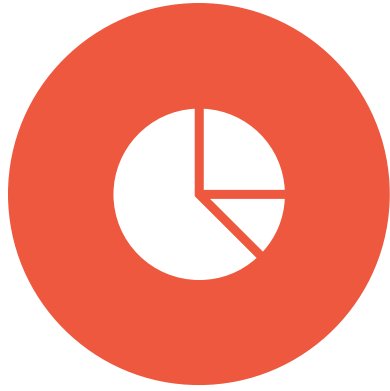
- a. Front yard
25'
- b. Side –
5'
Street (corner lot)
25'
- c. Rear (from
property line
or center of alley
where
one exists)
15'



Concept plat – Half Engineers Stonewall Rd



Title Lorem Ipsum



LOREM IPSUM DOLOR SIT AMET,
CONSECTETUER ADIPISCING ELIT.



NUNC VIVERRA IMPERDIET ENIM.
FUSCE EST. VIVAMUS A TELLUS.



PELLENTESQUE HABITANT MORBI
TRISTIQUE SENECTUS ET NETUS.